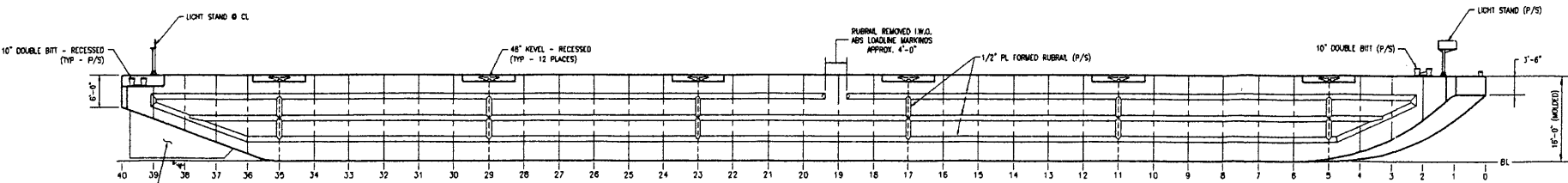


DECK PLAN

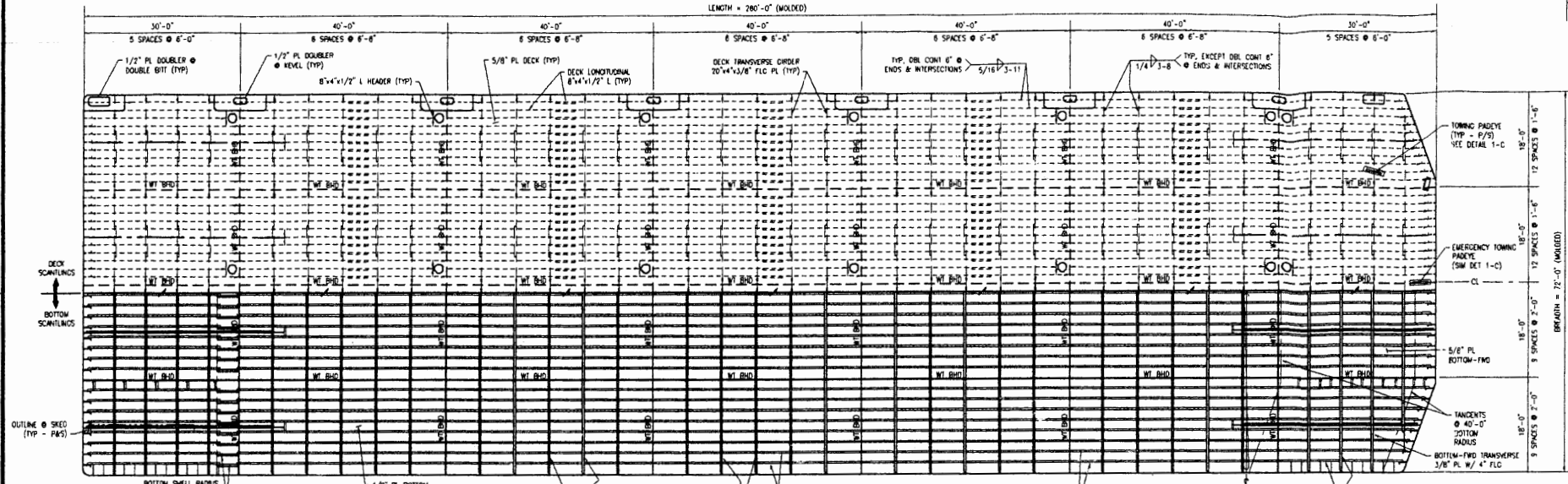


PROFILE

		<small>ALL DIMENSIONS UNLESS OTHERWISE SPECIFIED ARE IN FEET AND INCHES. UNLESS OTHERWISE SPECIFIED, ALL DIMENSIONS ARE TO FACE UNLESS OTHERWISE SPECIFIED. ALL DIMENSIONS ARE TO FACE UNLESS OTHERWISE SPECIFIED. ALL DIMENSIONS ARE TO FACE UNLESS OTHERWISE SPECIFIED.</small>	
<b>GENERAL ARRANGEMENT</b>			
PROJECT DESCRIPTION: 260'x72'x16'-0" DECK CARGO BARGE			
PROJECT: CERRAS MARINER	SCALE: 3/32"=1'-0"	DRAWN BY: BHS	APPROVED: ABS
DATE: 01/27/11	DATE: 01/27/11	DATE: 3/28/2011	DATE: 3/28/2011
DRAWING NO: H165-A1		REV: 1	

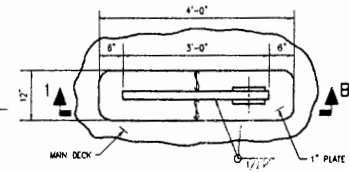
SISTER VESSEL TO HAILIMAR SHIPYARD HULL 158

REVISIONS		
NO.	DESCRIPTION	DATE

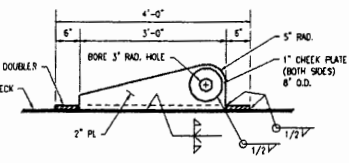


**DECK & BOTTOM SCANTLINGS**  
 PORT SIDE DECK SCANTLINGS SHOWN - STBD SIMILAR & OPPOSITE  
 STBD SIDE BOTTOM SCANTLINGS SHOWN - PORT SIDE SIMILAR & OPPOSITE

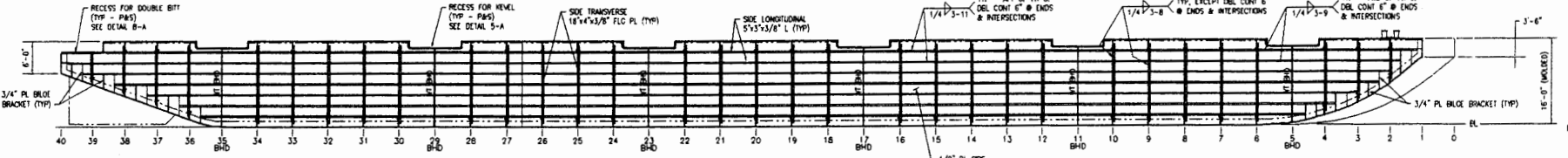
BARGE = 72'-0" (MOLDED)



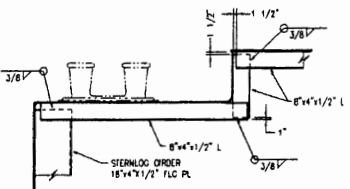
**DETAIL 1-C**  
 PLAN VIEW OF TOWING PADDEYE  
 EMERGENCY TOWING PADDEYE - SIMILAR  
 SCALE: 3/4"=1'-0"



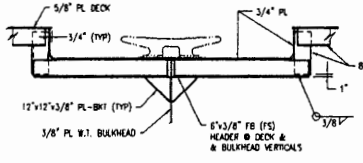
**SECTION 1-B**  
 SECTION OF TOWING PADDEYE  
 EMERGENCY TOWING PADDEYE - SIMILAR  
 SCALE: 3/4"=1'-0"



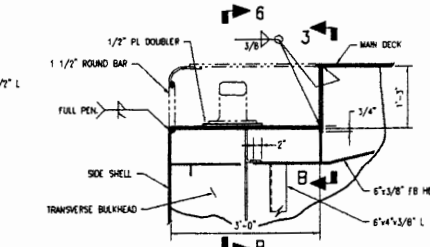
**SIDE SCANTLINGS**  
 FOR RUBBER DETAILS SEE DRAWING H158-57



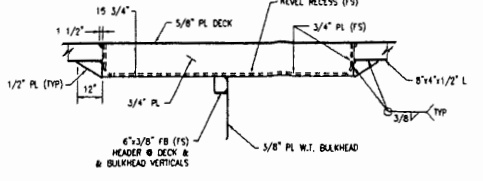
**SECTION 7-B**  
 SECTION OF DOUBLE BIT RECESS  
 SCALE: 3/8"=1'-0"



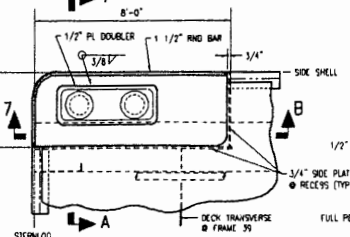
**DETAIL 6-B**  
 SECTION OF KEVEL RECESS  
 3/4" OFF CL  
 SCALE: 3/8"=1'-0"



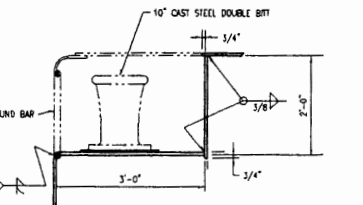
**SECTION 5-B**  
 SECTION OF KEVEL RECESS  
 SCALE: 3/4"=1'-0"



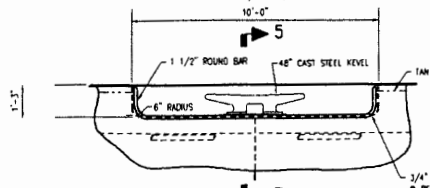
**DETAIL 3-B**  
 SECTION OF KEVEL RECESS INBOARD SIDE PLATE  
 3/4" OFF CL  
 SCALE: 3/8"=1'-0"



**DETAIL 8-A**  
 PLAN OF DOUBLE BIT RECESS  
 SCALE: 3/8"=1'-0"



**SECTION 7-A**  
 SECTION OF DOUBLE BIT RECESS  
 SCALE: 3/4"=1'-0"



**DETAIL 5-A**  
 SIDE ELEVATION OF KEVEL RECESS  
 SCALE: 3/8"=1'-0"

**TO CLASS:**  
 ABS CLASS #A1 DECK BARGE

- NOTES:**
1. ALL MATERIALS TO BE OF ABS QUALITY AND TO SURVEYOR'S SATISFACTION.
  2. ALL WORK TO BE PERFORMED IN ACCORDANCE WITH ABS REQUIREMENTS.
  3. MAIN DECK DESIGNED FOR MAXIMUM UNIFORM DRY LOAD OF 3,000 LBS. PER SQUARE FOOT.
  4. BARGE IS TO BE UNMANNED.
  5. ALL COMPARTMENTS ARE VOID, BUT DESIGNED TO BE BALLASTED VIA MANHOLE HATCHES.
  6. FIT-UP AND WELDING TO BE TO THE SATISFACTION OF THE ATTENDING ABS SURVEYOR.

**HALMAR**  
 P.O. BOX 2717, ALBUQUERQUE, N.M. 87103  
 PHONE: (505) 262-3111 FAX: (505) 262-3112

SCANTLINGS PLAN & DETAILS			
PROJECT NUMBER:	260'x72'x16'-0" DECK CARGO BARGE		
DRAWN BY:	DATE:	CHECK BY:	DATE:
HALMAR	3/22/11	HALMAR	3/28/2011
PROJECT NO.:	H165-S1	REV:	1

SISTER VESSEL TO HALMAR SHIPYARD HULL 158